

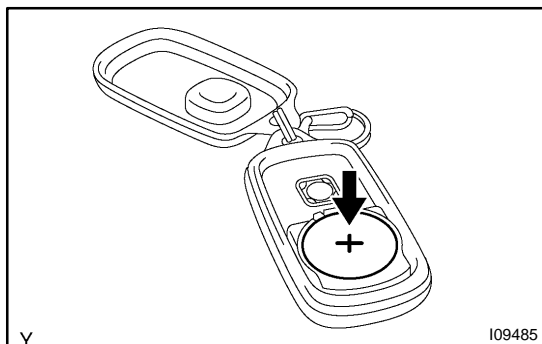
## REPLACEMENT

### 1. REPLACE TRANSMITTER (LITHIUM) BATTERY

- (a) Using a screwdriver, remove the cover.

**NOTICE:**

**Do not pry out the cover forcibly.**



- (b) Remove the battery (lithium battery) as shown in the illustration.

**NOTICE:**

- **Do not push the terminals with a finger.**
- **If prying up the battery (lithium battery) forcibly to remove, the terminals are deformed.**

- (c) Install a battery (lithium battery).

**NOTICE:**

**Face the battery upward. Take care not to deform the terminals.**

- (d) Install the cover.

**NOTICE:**

**It might cause faulty contact of battery (lithium battery) and terminals.**

### 2. REPLACE BACK DOOR ECU AND TRANSMITTER

**NOTICE:**

**When replacing the back door ECU and transmitter, registration of recognition code is necessary because they are provided as a single components.**

- (a) Select the operation mode to perform from the following operation modes.
- Add mode
  - Rewrite mode
  - Prohibition mode
  - Confirmation mode

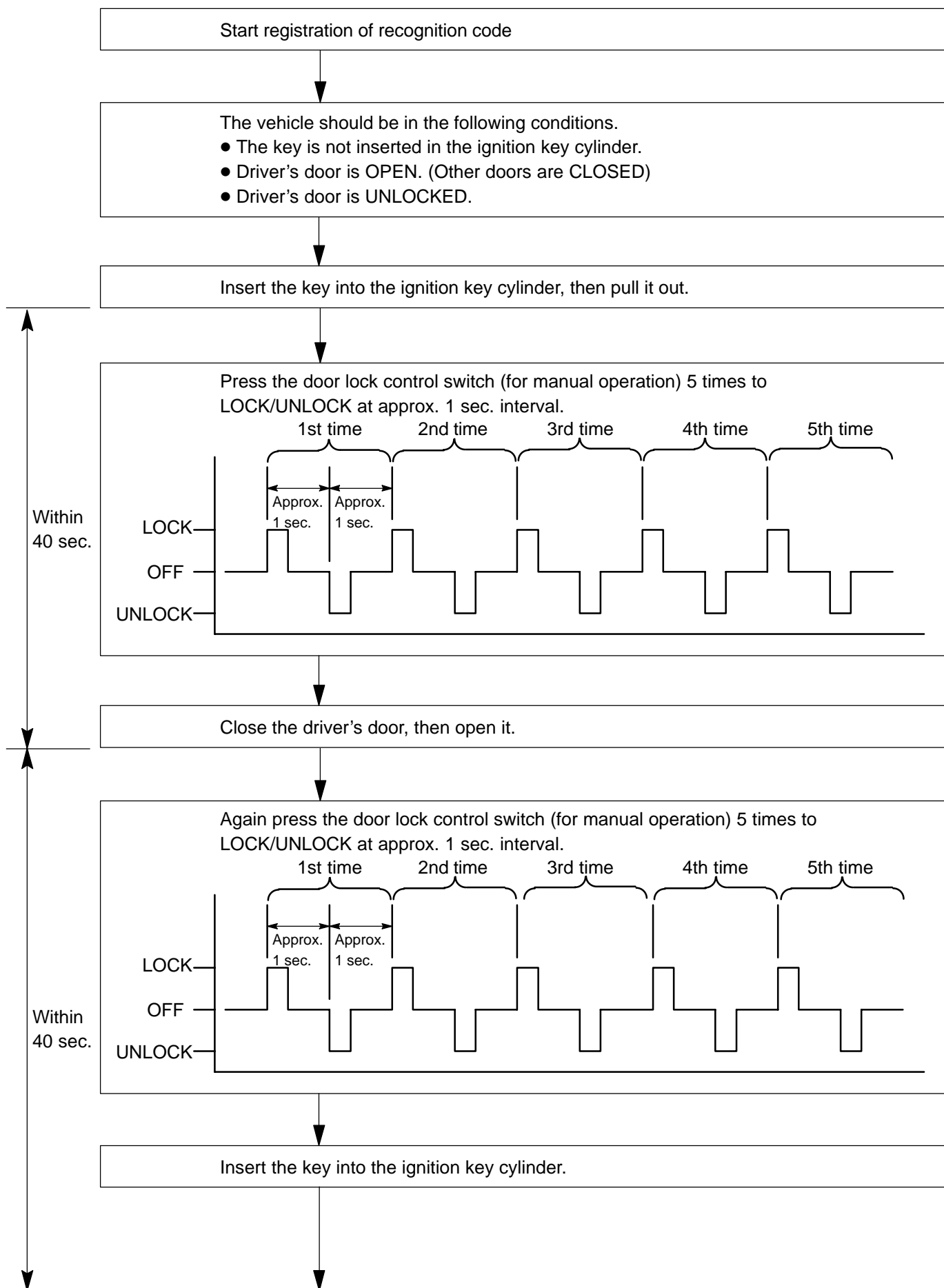
**HINT:**

- The add mode is used to retain codes already registered while you register new recognition codes. This mode is used when adding a transmitter. However, if the number of registered codes exceeds 4 codes, previously registered codes are correspondingly erased in order, starting from the first registered code.
- The rewrite mode is used to erase all previously registered codes and register only new recognition codes.
- The prohibition mode is used to erase all registered codes and cancels the wireless door lock function. Use this mode when the transmitter is lost.
- The confirmation mode is for confirming few many recognition codes are already registered before you register additional recognition codes.

- (b) Follow the chart on the following page to register the transmitter recognition code at the back door ECU.

HINT:

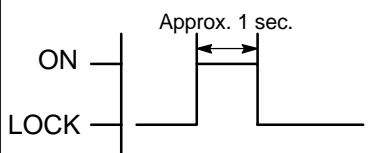
- When procedure is out of the specified, the operation returns to normal operation.
- Maximum 4 recognition codes can be registered.



Turn the ignition switch from ON to LOCK at approx. 1 sec. interval 1 to 5 times to select the mode.

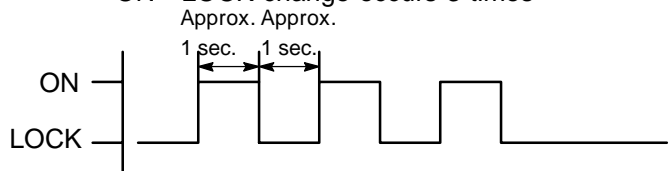
#### Add mode

ON - LOCK change occurs 1 time



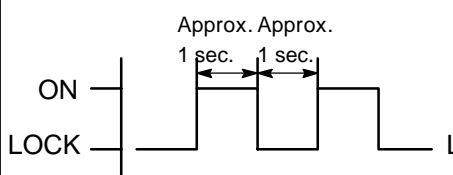
#### Confirmation mode

ON - LOCK change occurs 3 times



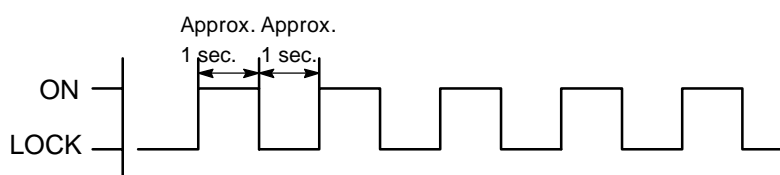
#### Rewrite mode

ON - LOCK change occurs 2 times



#### Prohibition mode

ON - LOCK change occurs 5 times



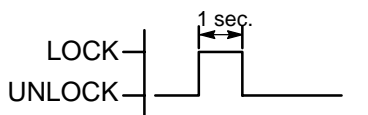
Pull out the key plate from the ignition key cylinder.

When add mode or rewrite mode is selected.

Body ECU automatically performs the LOCK-UNLOCK operation once or twice at 1 sec. interval to inform the operator that either the add mode or rewrite mode has been selected.

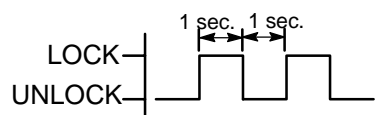
#### LOCK-UNLOCK occurs once

Indicates that add mode has been selected.



#### LOCK-UNLOCK occurs twice

Indicates that rewrite mode has been selected.



Within 3 sec.

When prohibition mode is selected.

When confirmation mode is selected.

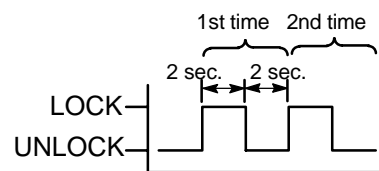
Body ECU automatically performs the LOCK-UNLOCK operation 1 to 4 times at 2 sec. interval to inform the operator of the number of the registered codes.

#### HINT:

When the number of the registered code is 0, the operation is automatically performed 5 times.

#### Example:

When the operation is performed twice, it directs that 2 type of recognition code have been registered.



Registration of recognition code (Confirmation mode and probation mode) is completed.

